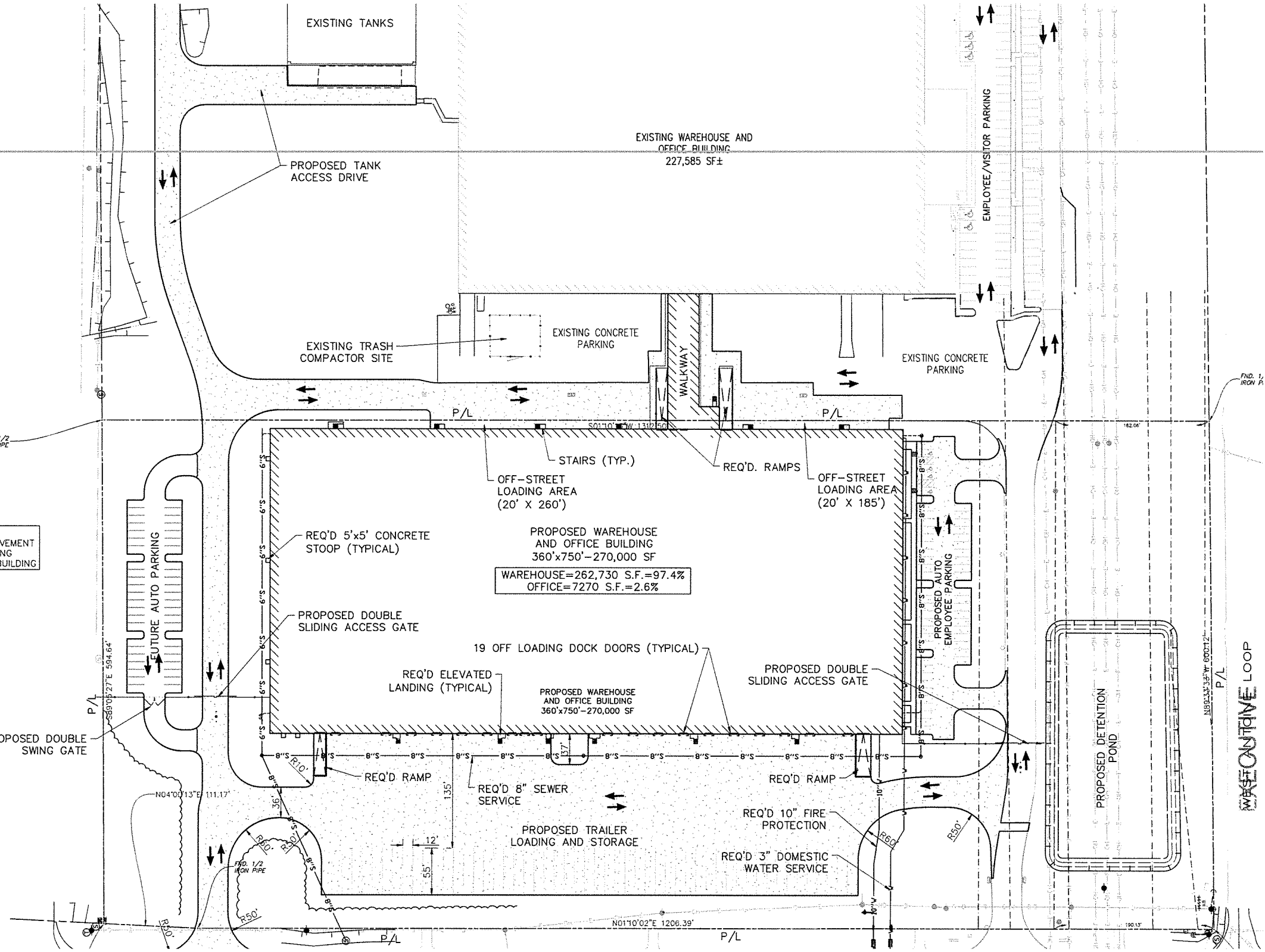


S:\M\A\SITE PLANS\LIBE TECH\WAREHOUSE\_ADDITION\DRAWINGS\18687\_MFC\_SITE\_PLANNING

NOTE: BARRIER CURB (6") IS PROPOSED AT ALL EDGE OF PAVEMENT THAT IS DOES NOT ABUT EXISTING PAVEMENT OR THE PROPOSED BUILDING



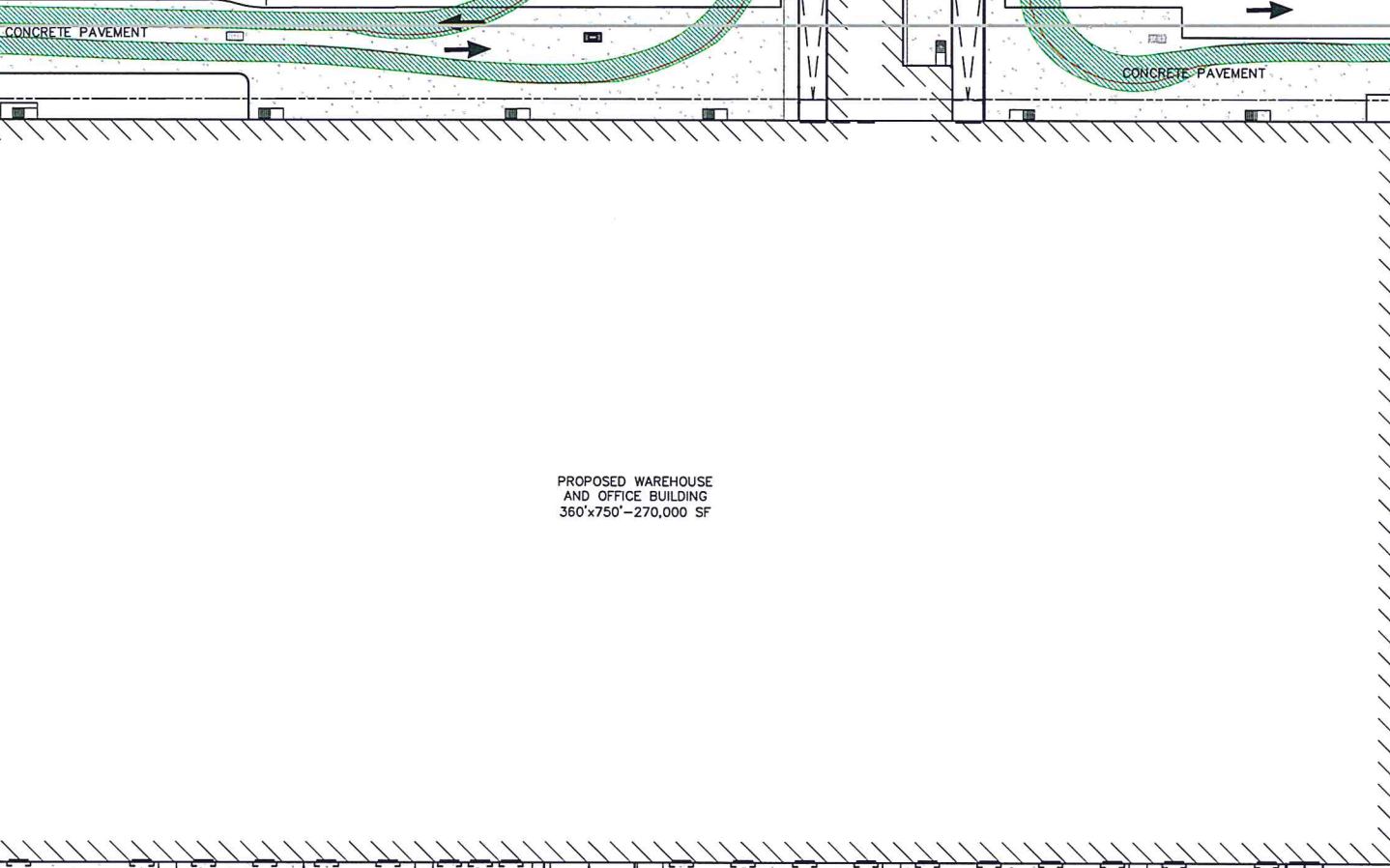
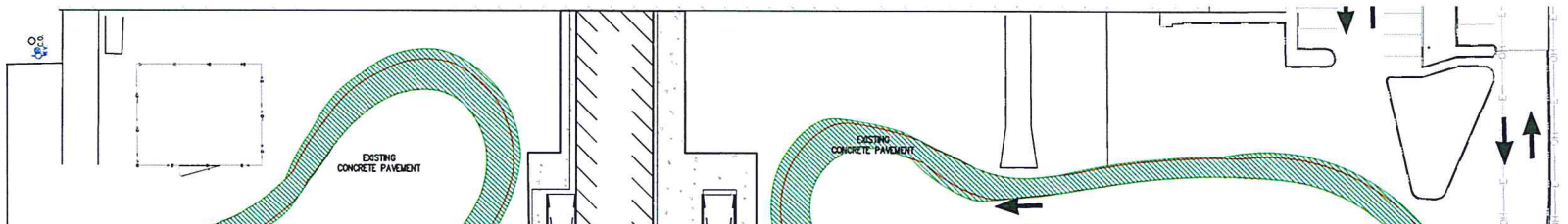
EXECUTIVE LOOP





NORTH

0 30' 60'



PROPOSED WAREHOUSE AND OFFICE BUILDING  
360'x750' - 270,000 SF

6" CURB - TYPICAL

CONCRETE PAVEMENT

CONCRETE PAVEMENT

CONCRETE PAVEMENT

R10'

CONCRETE PAVEMENT

53 TRAILER PARKING SPACES

6" CURB - TYPICAL

CONCRETE PAVEMENT

EXECUTIVE

FND. 1/2 IRON PIPE

PUMPER FIRE TRUCK PATH - TYPICAL

6" CURB - TYPICAL

R50'

R60'

R50'

12'

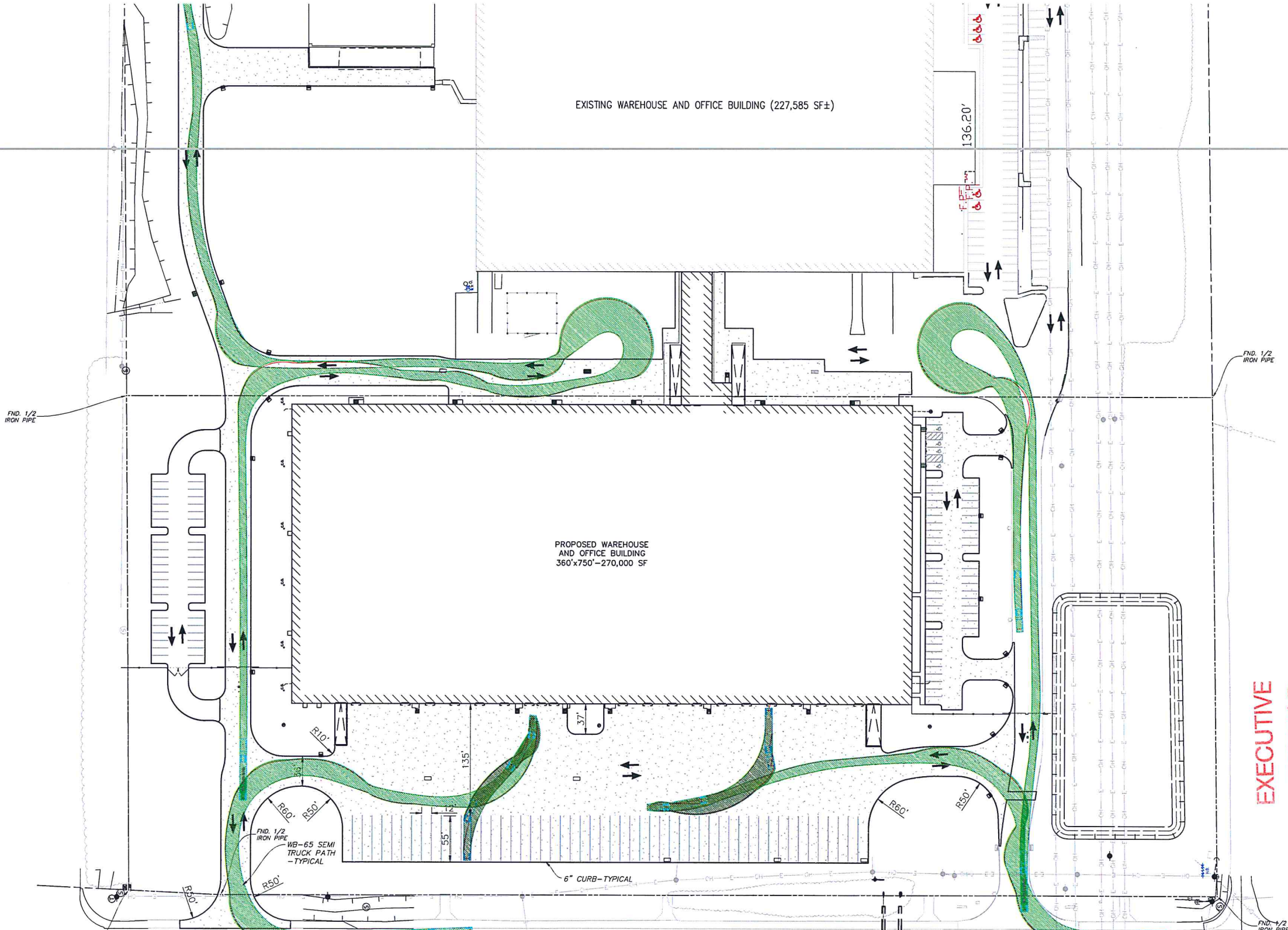
55'

135'

37'

R60'

R50'



EXISTING WAREHOUSE AND OFFICE BUILDING (227,585 SF±)

PROPOSED WAREHOUSE AND OFFICE BUILDING  
360'x750' - 270,000 SF

FND. 1/2  
IRON PIPE

FND. 1/2  
IRON PIPE

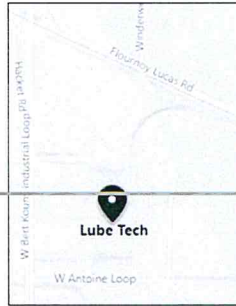
FND. 1/2  
IRON PIPE  
WB-65 SEMI  
TRUCK PATH  
- TYPICAL

6" CURB - TYPICAL

EXECUTIVE  
SITEPLAN

FND. 1/2  
IRON PIPE

STORAGE WAREHOUSE FOR OILS  
 GROUP S-1  
 CONSTRUCTION TYPE 2-B NON-COMBUSTIBLE MATERIALS  
 UNLIMITED FLOOR AREA WITH SPRINKLERS



1 PROJECT LOCATION  
 A1.0 NO SCALE



2 ARIEL SITE VIEW  
 A1.0



**PROJECT TEAM & SHEET INDEX**

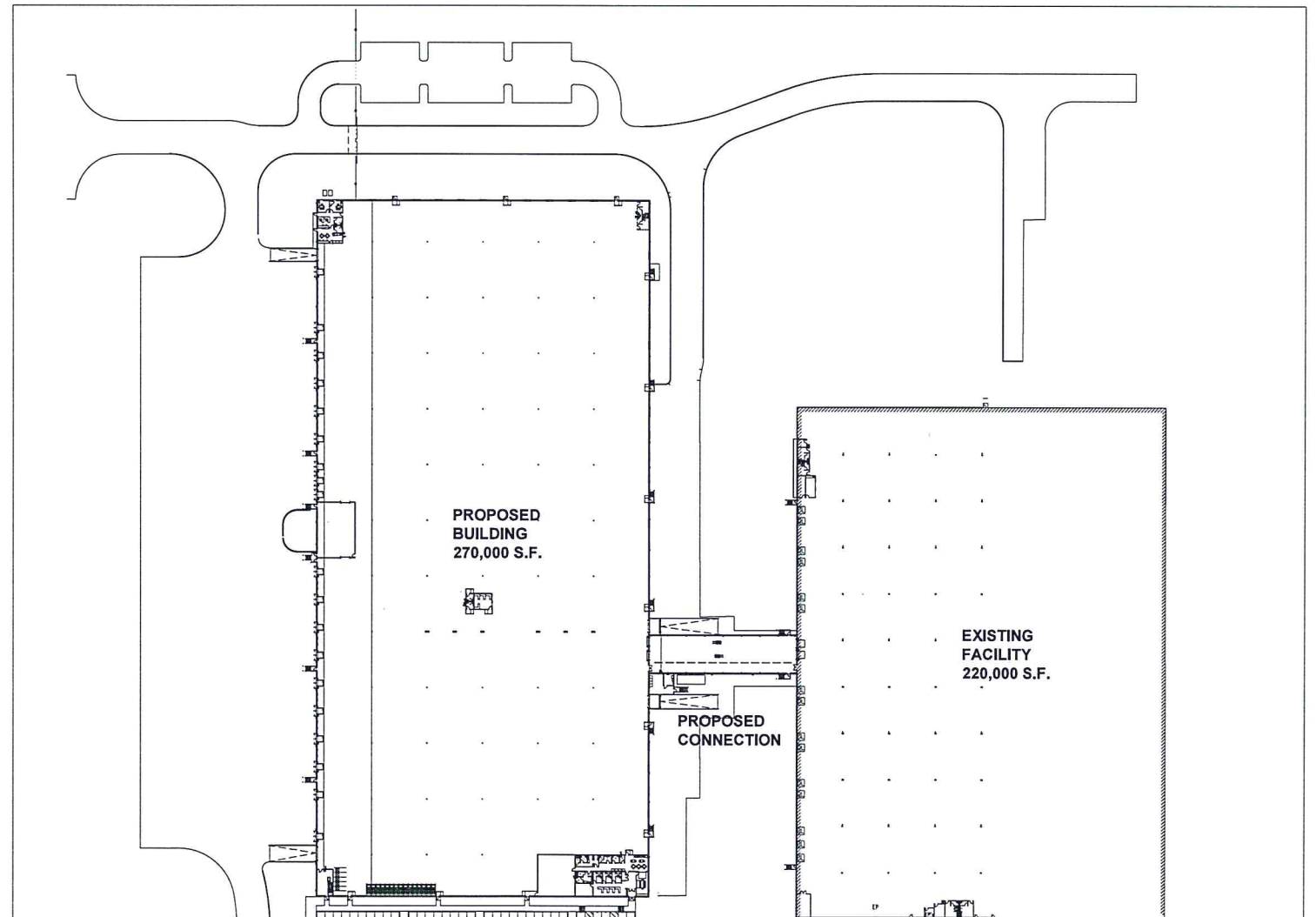
SHT #	HOUWMAN ARCHITECTS	REVIEW SET	PERMIT SET / updated
			11-26-25
A1.0	COVER SHEET / SITE PLAN	9-29-2025	
A1.1	BUILDING CODE / ENERGY REVIEW	9-29-2025	11-7-2025
A1.2	SITE PLAN	9-29-2025	11-7-2025
A1.3	TENANT FLOOR PLAN	9-29-2025	11-7-2025
A2.0	FLOOR PLAN	9-29-2025	11-7-2025
A2.0.1	CONTAINMENT FLOOR PLAN	9-29-2025	11-7-2025
A2.1	NORTH 1/2 FLOOR PLAN	9-29-2025	11-7-2025
A2.2	SOUTH 1/2 FLOOR PLAN	9-29-2025	11-7-2025
A2.3	N.W., CENTER, S.W. OFFICE FLOOR PLANS	9-29-2025	11-7-2025
A2.4	S.E. OFFICE FLOOR PLAN	9-29-2025	11-7-2025
A2.5	H-ROOM FLOOR PLAN	9-29-2025	11-7-2025
A2.6	CONNECTION FLOOR PLAN	9-29-2025	11-7-2025
A2.7	CEILING FLOOR PLAN	9-29-2025	11-7-2025
A2.8	ROOF PLAN	9-29-2025	11-7-2025
A2.9	TOILET ROOM DETAIL FLOOR PLANS	9-29-2025	11-7-2025
A3.0	EXTERIOR ELEVATIONS	9-29-2025	11-7-2025
A3.1	EXTERIOR ELEVATIONS	9-29-2025	11-7-2025
A3.2	EXTERIOR ELEVATIONS	9-29-2025	11-7-2025
A3.3	EXTERIOR RENDERINGS	9-29-2025	11-7-2025
A4.0	BUILDING & WALL SECTIONS	9-29-2025	11-7-2025
A4.1	CONNECTION SECTIONS	9-29-2025	11-7-2025
	<b>CIVIL ENGINEER - Mohr and Associates, Inc</b>		OCTOBER 2025
	1324 N. Hearne Ave., Ste 301 Shreveport, Louisiana 318-686-7190		
	27 sheets		
	<b>STRUCTURAL ENGINEER - AILLET, FENNER, JOLLY, &amp; McCLELLAND INC.</b>		NOVEMBER 2025
	3003 Knight Street, Suite 120 Shreveport, Louisiana 318-425-7452		
	18 sheets		

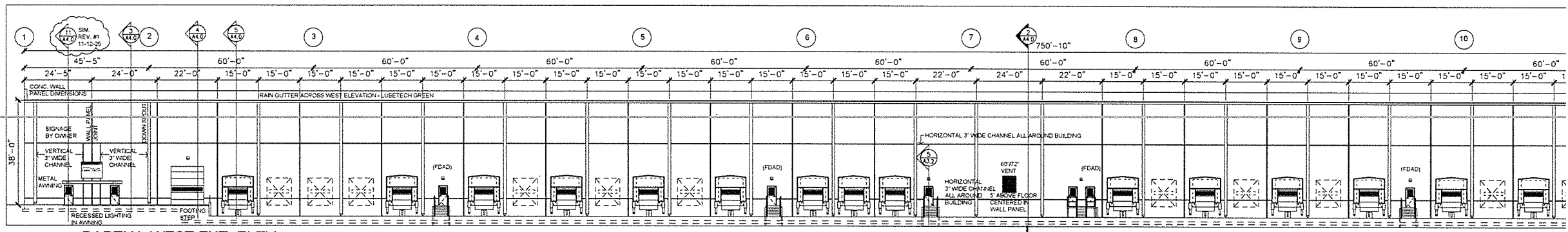


3 PROPOSED BUILDING - SOUTHWEST CORNER  
 A1.0 NO SCALE

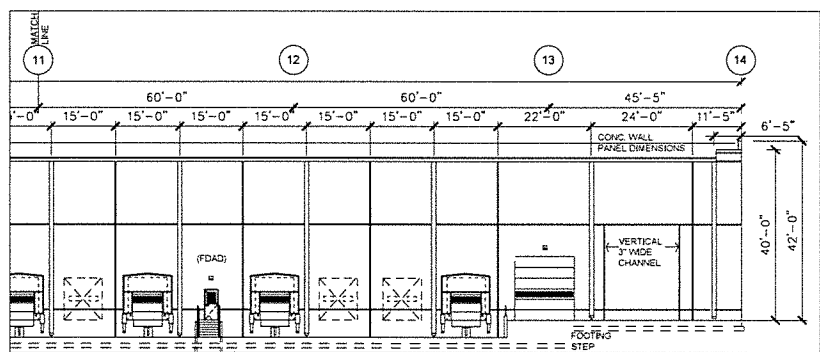


5 PROPOSED MONUMENT SIGNAGE  
 A1.0 NO SCALE

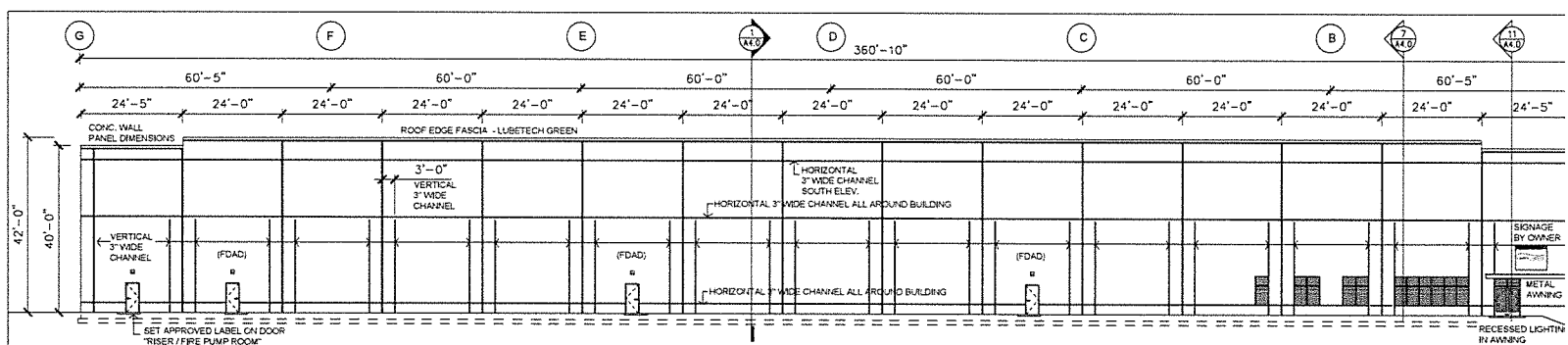




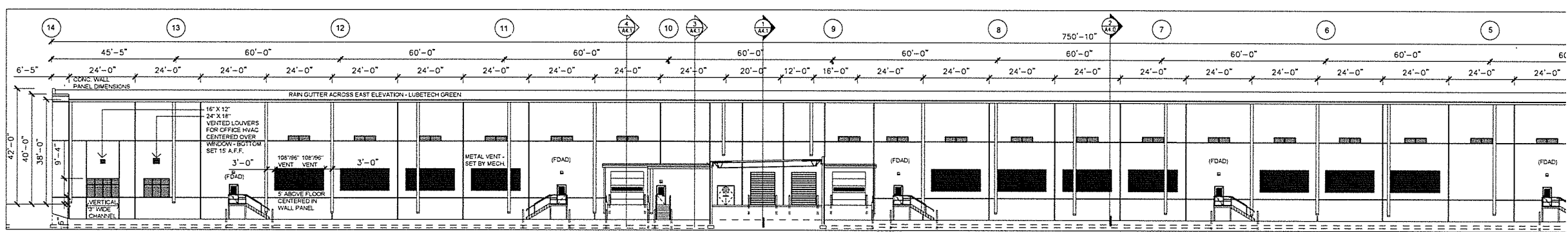
**PARTIAL WEST EXT. ELEV.**  
SCALE: 1/16" = 1'-0" (FDAD) SET APPROVED LABEL ON DOOR 'FIRE DEPARTMENT ACCESS DOOR - DO NOT BLOCK'



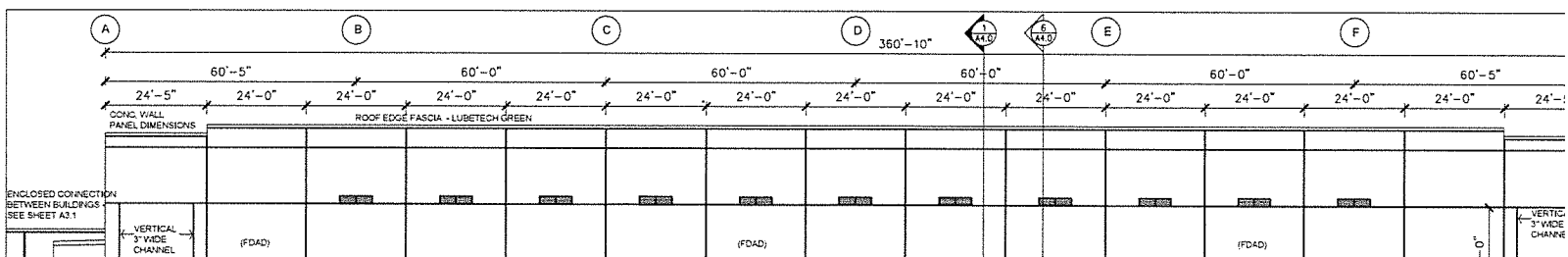
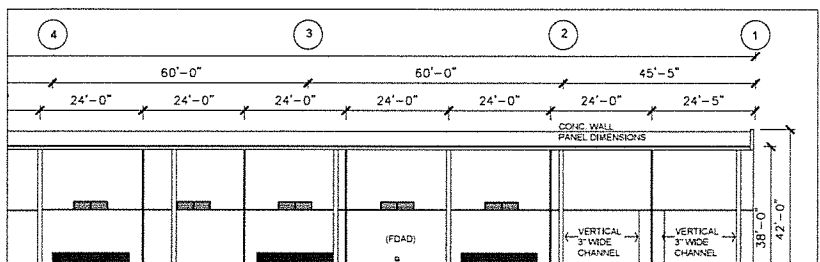
**PARTIAL WEST EXT. ELEV.**  
SCALE: 1/16" = 1'-0"



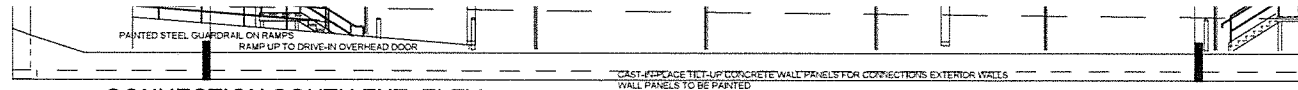
**SOUTH EXT. ELEV.**  
SCALE: 1/16" = 1'-0"



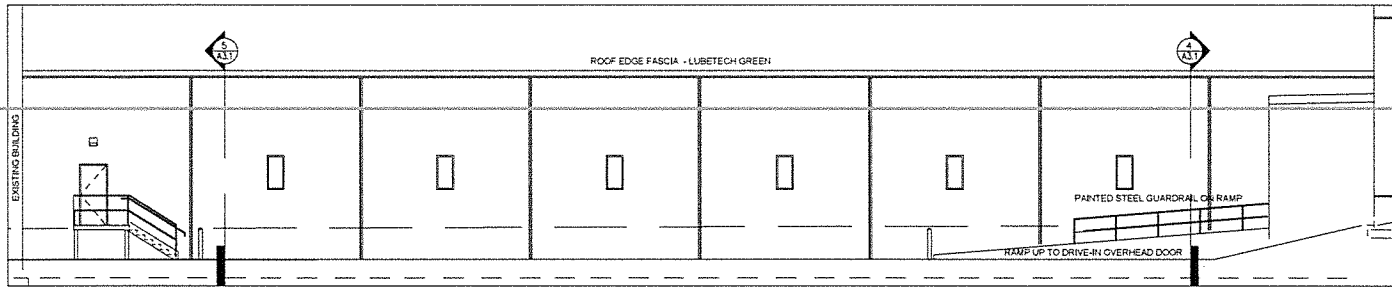
**PARTIAL EAST EXT. ELEV.**  
SCALE: 1/16" = 1'-0"



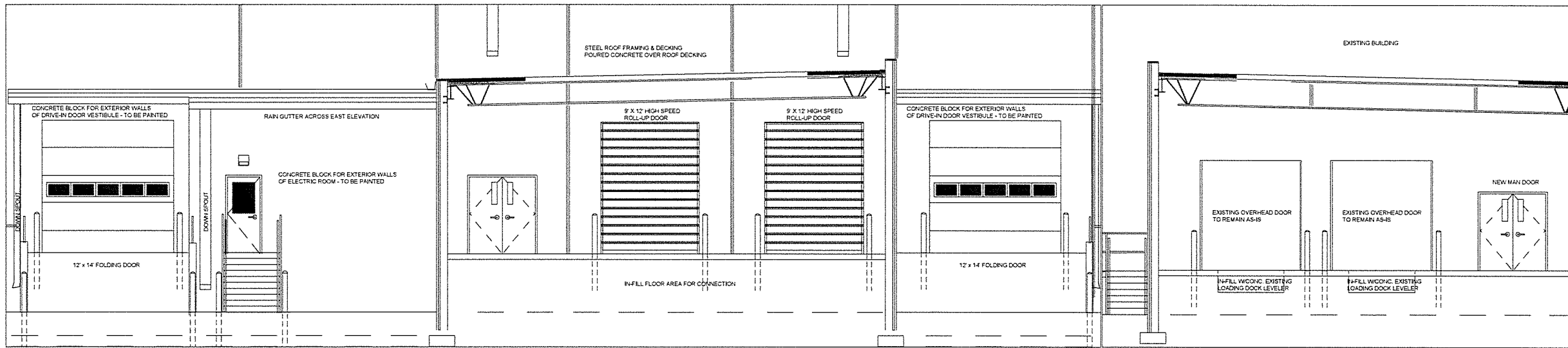
**1 BUILDING SOUTH EXTERIOR ELEVATION**  
 SCALE : 1/32" = 1'-0"



**2 CONNECTION SOUTH EXT. ELEV.**  
 SCALE : 1/8" = 1'-0"

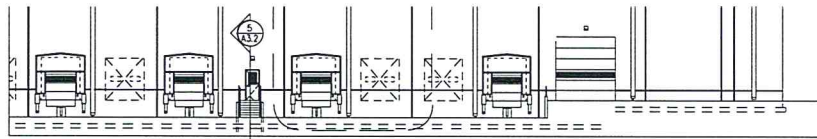


**3 CONNECTION NORTH EXT. ELEV.**  
 SCALE : 1/8" = 1'-0"

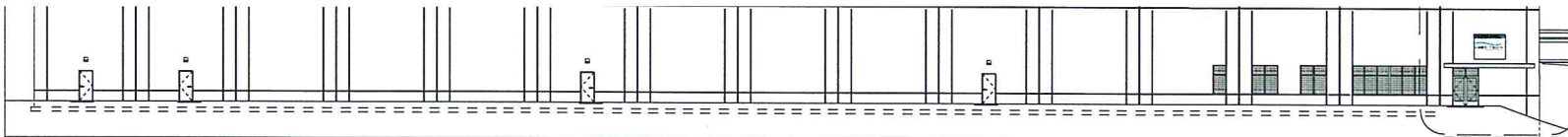


**4 CROSS-SECTION OF CONNECTION**  
 SCALE : 1/4" = 1'-0"

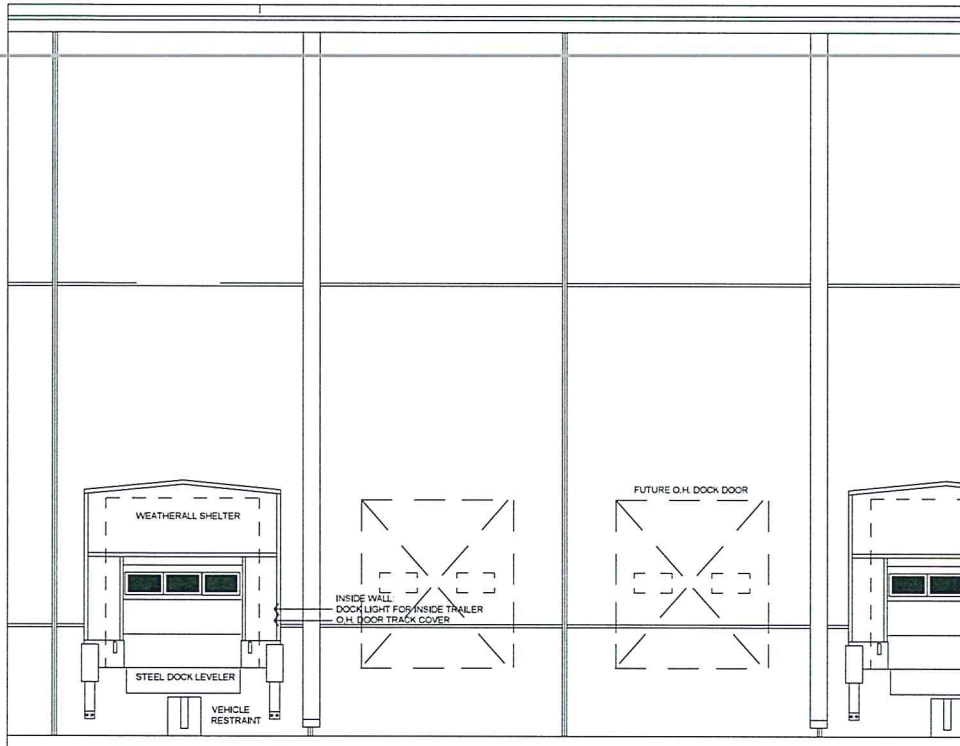
**5 CROSS-SECTION OF CONNECTION**  
 SCALE : 1/4" = 1'-0"



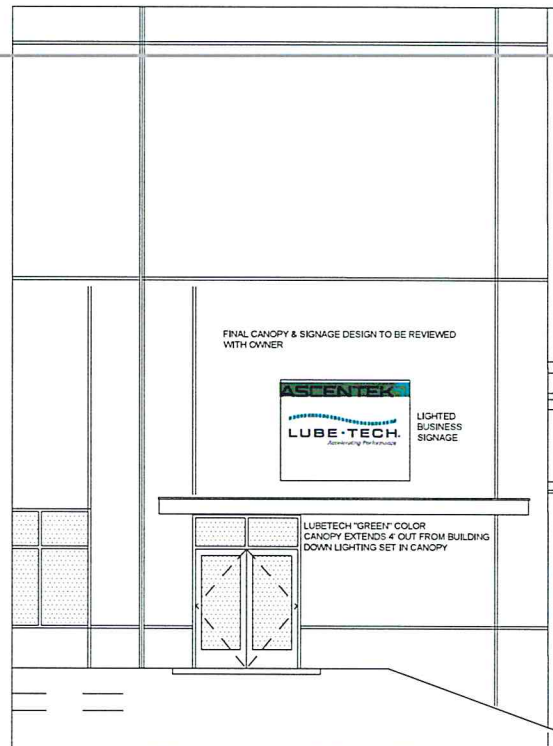
1 PARTIAL WEST EXT. ELEV.  
SCALE: 1/16" = 1'-0"



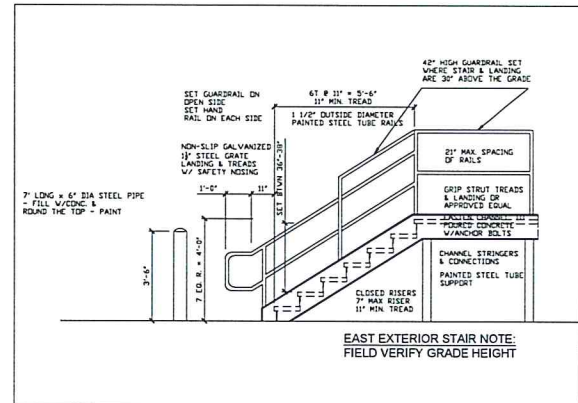
2 SOUTH EXT. ELEV.  
SCALE: 1/16" = 1'-0"



3 PARTIAL WEST EXT. ELEV.  
SCALE: 1/4" = 1'-0"



4 MAIN ENTRANCE EXT. ELEV.  
SCALE: 1/4" = 1'-0"



5 LOADING DOCK STAIR DETAIL - west side  
SCALE: 3/8" = 1'-0"

### WeatherAll Shelters WTS-100-24 Product Specifications



WeatherAll is a product of Miller 4Point Engineered Solutions reserves the right to change specifications and designs without notice and without incurring obligations.

**DESIGN HIGHLIGHTS**

- Shelter curtains are 22 oz. black vinyl-coated fabric
- Frame is constructed of rugged roll-formed galvanized steel
- Two overlapping wear pleats on each head curtain corner
- Head frame is covered with white translucent fiberglass to transmit natural light into the loading area. Side frames are covered with 18 oz. white vinyl-coated fabric.
- Full length closed cell neoprene forms a wiper seal on the trailer's sides
- Wind strips on head curtain keep the head curtain from being blown out of position when the shelter is not in use
- Black header permits weather drainage
- Wear panels with guide stripes provide visual reference to the dock
- Foam weather strip provides a seal on the top front edge of the shelter frame under aluminum trim angle
- Race curtains are sewn with multi-stranded, bonded polyester thread. Durable

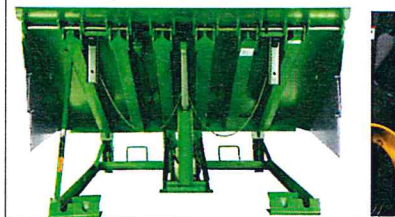
**PROJECT**

JOB NAME \_\_\_\_\_  
ADDRESS \_\_\_\_\_  
GENERAL CONTRACTOR \_\_\_\_\_  
DISTRIBUTOR \_\_\_\_\_  
QUANTITY \_\_\_\_\_

**CERTIFY**

BY \_\_\_\_\_  
COMPANY \_\_\_\_\_  
ADDRESS \_\_\_\_\_  
DATE \_\_\_\_\_

### HK-S Series Hydraulic Dock Leveler Product Specifications



16" LIP  
SPECIAL PAINT COLOR/LUBE-TECH GREEN  
ENERGY GUARD PERIMETER WEATHERSEAL SYSTEM  
BUMPER - VBA20-11 STEEL FACED  
CAPACITY - UNLIMITED  
DIGITAL MASTER CONTROL PANEL WITH HMI

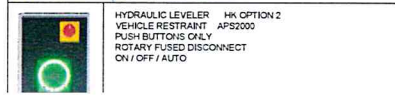
7 DOCK LEVELER  
NO SCALE

### APS 2000 Vehicle Restraint Product Specifications



9 VEHICLE RESTRAINT  
NO SCALE

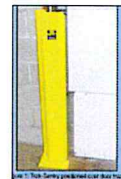
### Digital Master Control Panel with HMI Product Specifications



HYDRAULIC LEVELER - HK OPTION 2  
VEHICLE RESTRAINT - APS2000  
PUSH BUTTONS ONLY  
ROTARY FUSED DISCONNECT  
ON / OFF / AUTO



Technical Specifications	
Output	1,100 lumens, 20" beam pattern
Input	120VAC 50/60Hz @ 1A, cord with 3-prong plug 100-277VAC 50/60Hz - optional pigtail
Power	11 watts
Location	Suitable for damp locations
Construction	Stainless steel hardware, impact resistant clear polycarbonate lens
Life	50,000 hours
Certifications	UL, CSA



Technical Specifications	
Available Size	3" x 6" (standard-duty) or 1 1/2" (heavy-duty) Available in 3' x 6' or 6' x 6'
Installation	Various heights Instructions provided, use AP7221 metal Instructions, Trai-Sentry
Construction	Heavy-duty welded steel
Material	Stainless Steel / Heavy-Duty 304SS / 404 / 316SS / 404

11 O.H.DOOR TRACK COVER  
NO SCALE



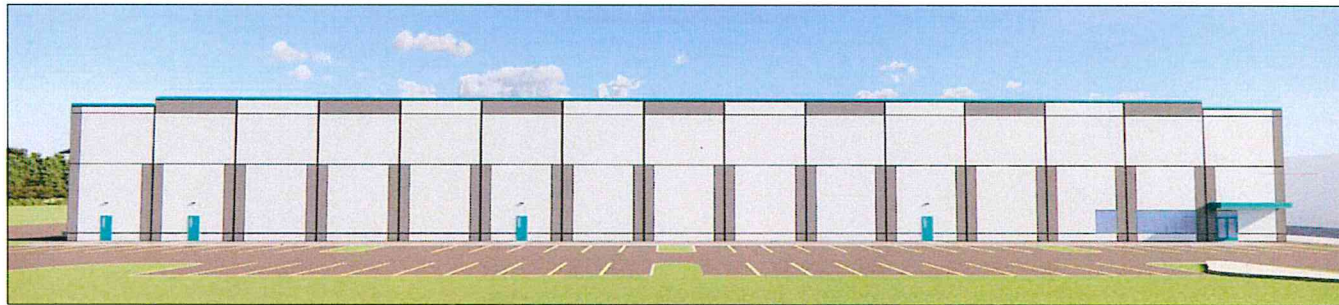
1  
A3.3 SOUTH WEST PERSPECTIVE  
NO SCALE

FINAL EXTERIOR PAINT COLORS TO BE REVIEWED WITH OWNER  
VIEWS ARE CONCEPTUAL - MAY NOT MATCH EXACTLY TO ARCHITECTURAL PLANS



5  
A3.3 SE OFFICE ENTRY  
NO SCALE

FINAL CANOPY & SIGNAGE DESIGN  
TO BE REVIEWED WITH OWNER



2  
A3.3 SOUTH PERSPECTIVE  
NO SCALE



6  
A3.3 MONUMENT SIGN EXAMPLE  
NO SCALE

VERIFY W/ G.C. & MONUMENT SIGN MANUFACTURE



3  
A3.3 SOUTH EAST PERSPECTIVE  
NO SCALE

FINAL CANOPY & SIGNAGE DESIGN  
TO BE REVIEWED WITH OWNER



7  
A3.3 DOCK VESTIBULE  
NO SCALE

