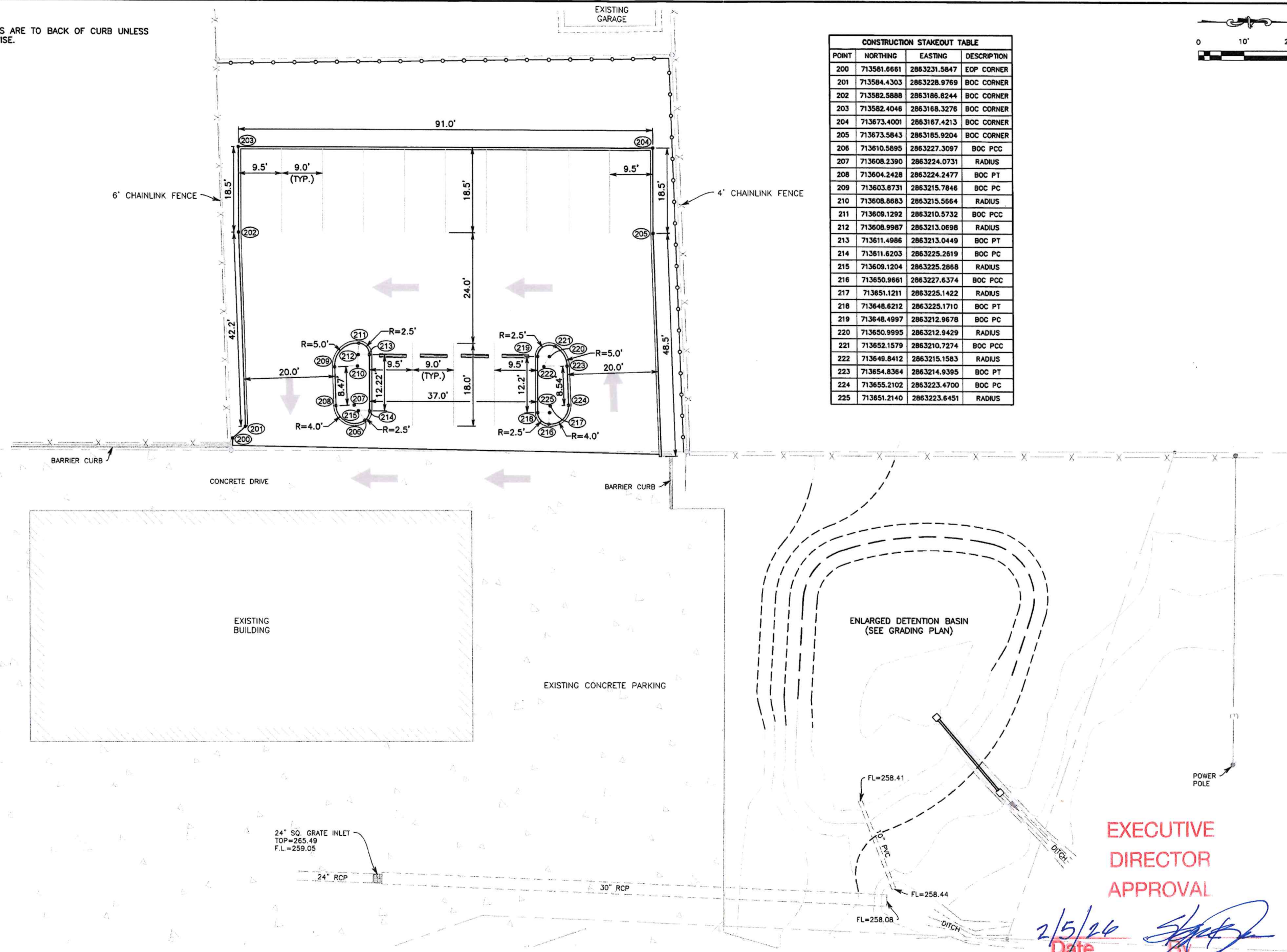


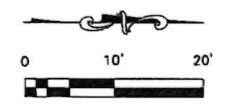




NOTE:  
ALL DIMENSIONS ARE TO BACK OF CURB UNLESS NOTED OTHERWISE.



CONSTRUCTION STAKEOUT TABLE			
POINT	NORTHING	EASTING	DESCRIPTION
200	713581.6661	2863231.5847	EOP CORNER
201	713584.4303	2863228.9769	BOC CORNER
202	713582.5888	2863186.8244	BOC CORNER
203	713582.4046	2863168.3276	BOC CORNER
204	713673.4001	2863167.4213	BOC CORNER
205	713673.5843	2863185.9204	BOC CORNER
206	713610.5895	2863227.3097	BOC PCC
207	713608.2390	2863224.0731	RADIUS
208	713604.2428	2863224.2477	BOC PT
209	713603.8731	2863215.7846	BOC PC
210	713608.8683	2863215.5664	RADIUS
211	713609.1292	2863210.5732	BOC PCC
212	713608.9987	2863213.0698	RADIUS
213	713611.4986	2863213.0449	BOC PT
214	713611.6203	2863225.2619	BOC PC
215	713609.1204	2863225.2868	RADIUS
216	713650.9661	2863227.6374	BOC PCC
217	713651.1211	2863225.1422	RADIUS
218	713648.6212	2863225.1710	BOC PT
219	713648.4997	2863212.9678	BOC PC
220	713650.9995	2863212.9429	RADIUS
221	713652.1579	2863210.7274	BOC PCC
222	713649.8412	2863215.1583	RADIUS
223	713654.8364	2863214.9395	BOC PT
224	713655.2102	2863223.4700	BOC PC
225	713651.2140	2863223.6451	RADIUS



REVISIONS

**FORTE & TABLADA**

1010 MARSHALL STREET  
SHREVEPORT, LA 71101  
PHONE (318) 798-3344  
FAX (318) 798-2090  
WWW.FORTEANDTABLADA.COM

**GUARDIAN ALARM SYSTEMS**  
SHREVEPORT, LOUISIANA

GEOMETRIC PLAN

STATE OF LOUISIANA  
Department of Surveying  
Reg. No. 19025  
Professional Engineer  
10-31-25

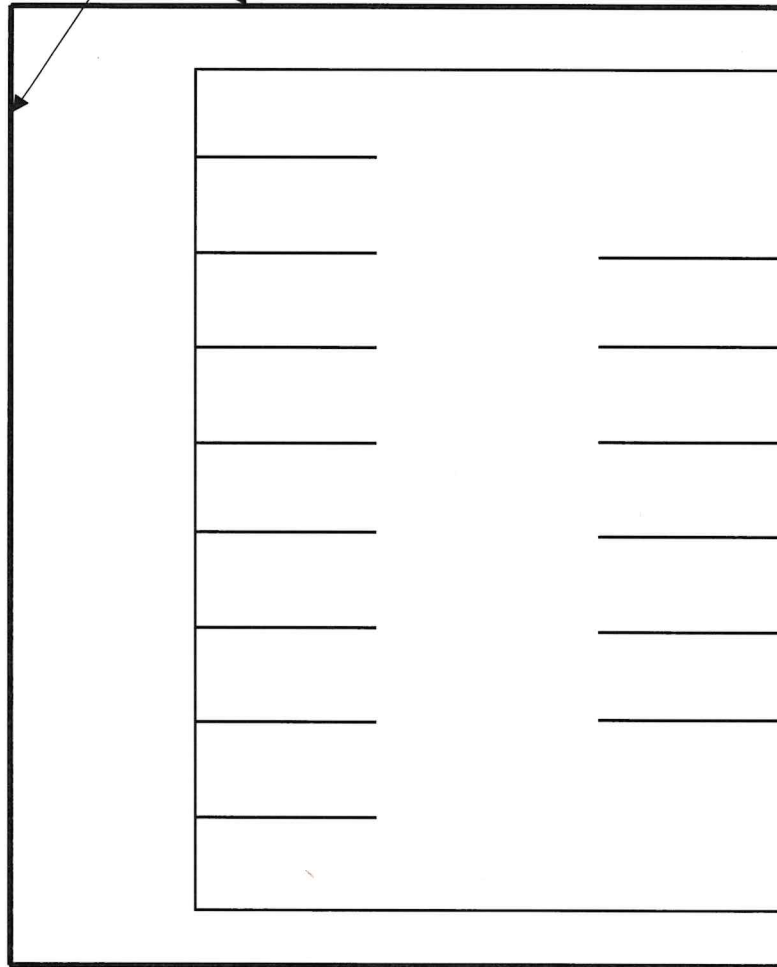
**EXECUTIVE DIRECTOR APPROVAL**

2/5/26  
Date *[Signature]*

PROJECT NO: 250126  
DATE: OCTOBER 31, 2025  
SHEET NO: 3  
250126-03-CEO



6' Vinyl Privacy Fence



6' Chain link Fence

EXECUTIVE  
DIRECTOR  
APPROVAL

N



2/5/26  
Date

*[Signature]*  
By

